



HI-LINERS MUSICAL THEATRE PRESENTS

Director
Kathleen Edwards

Fight Choreographer
Andy Rice



**SHE
KILLS
YOUNG MONSTERS**
ADVENTURERS EDITION
BY **QUI NGUYEN**

“She Kills Monsters: Young Adventurers Edition” First produced in New York City The Flea Theater
Jim Simpson, Artistic Director; Carol Ostrow, Producing Director

“She Kills Monsters: Young Adventurers Edition” is presented by arrangement with Concord Theatricals
on behalf of Samuel French, Inc.

(www.concordtheatricals.com)

THE CAST

AGNES EVANS..... LUCIANA COLELLO
TILLY EVANS.....NOVA RIETBERG
ORCUS/RONNIE.....ALEX MCDUFFIE
VERA.....HAYDEN BARHAM
CHUCK.....RICHARD GLAMAN
MILES.....AUSTIN BAKER
KALIOPE/KELLY.....ASHA NAVARATNASINGAM
LILITH.....FAYE HOSTETTER
STEVE.....JOSIAH RICE
FARRAH/MONSTER.....CHRISTINA LE
NARRATOR/MONSTER.....LAUREN HUSERIK
NARRATOR/MONSTER.....MADDY RICE
EVIL GABBI.....ELODIE SWAIN
EVIL TINA.....SIENNA HANDFELT
MONSTER ENSEMBLE.....KOLYA GONZALEZ - WILER
MONSTER ENSEMBLE.....MICHAEL HESS
MONSTER ENSEMBLE.....LUCY MCCURDY - MOSS
MONSTER ENSEMBLE.....JOSEPHINE NOVICK
MONSTER ENSEMBLE.....JESSE OLSEN
MONSTER ENSEMBLE.....ALEX RUNNELS

A MESSAGE FROM THE ARTISTIC DIRECTOR

WE ARE BACK! I am feeling a little shaky, because this return was never guaranteed. It has been a year of following the news, making decisions based on the reports, only to watch those decisions become meaningless days later as the news evolved. We were flexible, and when that wasn't going to be enough, we worked to be more nimble. Eventually we learned to be downright acrobatic. Thanks to a lot of mental and budgetary gymnastics, we are here and we seem to be on our feet. We are determined to stick the landing. We have not done this alone, although we felt very alone for moments at a time. I think everyone did. But, ultimately, it has been the community that has brought us through. You may not even realize your contribution, but you did this, and we will continue to prevail, with your help.

It's a little hard to remember now, but even before the pandemic hit, we lost our rehearsal/performance space at the Annex in January of 2020. We were thrilled to be given a two year stay in studios at the Highline Performing Arts Center, and then, disappointed when those studios at the PAC got absorbed into active use by the builders during reconstruction of the high school. But, who needed studios anyway? Students and cast members joined us online! Of course, as you can imagine, it was only a fraction of the participation that we normally experience. During our monthly Zoom meetings, the Board of Directors stared gloomily at a budget that projected our first deficit since 2009. As we headed into 2021, the possibility of closing the doors by the end of April loomed.

So, how did we make it? Hi-Liners are keeping Hi-Liners going. People sitting in this room donated money every time they could to help sustain us. Some of you brought your kids, or even yourselves, to virtual classes and shows presented in ways we had never imagined. Very brave Hi-Liners joined the board at the most challenging moment in HMT history and brainstormed, strategized, and toiled to keep the doors from closing. Paid positions from video editing to teaching, costuming to stage combat, set building to scenic painting, have been transformed to volunteer roles as artists who believe in the mission of this theatre lend their time and talents so that we can operate on a shoestring. HMT friends found us a stage, and studios for the summer theatre camps that will help bring us back. Parents in this room got their young performers to online auditions, supported them through the challenges of returning to in-person rehearsals, and then bought tickets to support their growth. You did this. You are doing this.

What happens now? We are determined to present a complete season this year. After consistently producing MainStage since 1994, we have been dark at the PAC for two summers in a row. In order to bring MainStage back, we have kept expenses to a minimum and begun to chip away at the deficit, which has already been reduced by 2/3! We are working on securing a venue for our school year programs and planning an exciting new format for our November fundraiser. We are staying nimble.

But let's focus on what we have already accomplished. As the curtain call happens tonight, give those performers a hand, and then look around and include the entire room in your applause.

Kathleen Edwards
Artistic Director

PRODUCTION TEAM

DIRECTOR..... KATHLEEN EDWARDS
PRODUCTION STAGE MANAGER.....JAXEN CALEB HEDBERG
FIGHT CHOREOGRAPHER.....ANDY RICE
SET DESIGNER.....FRANKIE CURRY EDWARDS
SET PAINTERS.....KERRY COLELLO AND TONY CURRY
CARPENTER / PROPS.....MICHAEL AND MATA MCDUFFIE
COSTUMER.....JOAN GLAMAN
COMPOSER.....DUNCAN KRUMMEL

HI-LINERS BOARD OF DIRECTORS

President - Jesse Northrup

Vice President - Allison Gobat

Secretary - Lisa Finkral

Treasurer - Lynn Root

Krystle Alan, Nancy Becker, Frellie Campos, Joan Glaman,
Gretchen Handfelt, Diane Kennish, Mata McDuffie, Michael McDuffie

Artistic Director - Kathleen A. Edwards

Managing Director - Jaxen Caleb Hedberg

HI-LINERS VISION:

*To be the preeminent youth theater organization in South King County delivering
high quality live musical theatre to our audiences.*

HI-LINERS MISSION:

*To preserve and advance the performing arts in the lives of the students in our community.
To involve young people in the performing arts in order to produce higher levels of achievement and life awareness.
To achieve these goals while maintaining a reasonable cost structure for both our performers and our audiences.
The Hi-Liners and our volunteers are dedicated to that end.*

CAST



CHARACTER NAME: MILES
PLAYER NAME: AUSTIN BAKER
BACKGROUND SCHOOL: CHOICE ACADEMY
EXPERIENCE: GRADE 12
CLASS: ROGUE
RACE: HALFLING
ALIGNMENT: CHAOTIC NEUTRAL
DEXTERITY +12
INTELLIGENCE +3
CHARISMA +10

CHARACTER NAME: VERA
PLAYER NAME: HAYDEN BARHAM
BACKGROUND SCHOOL: THE CENTER SCHOOL
EXPERIENCE: GRADE 11
CLASS: BARD
RACE: HALF-ORC
ALIGNMENT: CHAOTIC EVIL
DEXTERITY +7
INTELLIGENCE +5
CHARISMA +9



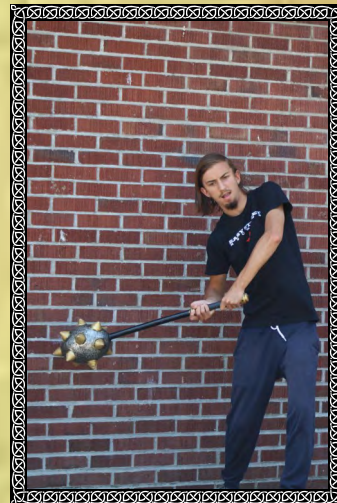
CHARACTER NAME: AGNES EVANS
PLAYER NAME: LUCIANA COLELLO
BACKGROUND SCHOOL: MOUNT RAINIER HIGH SCHOOL
EXPERIENCE: GRADE 10
CLASS: SORCERER
RACE: ELF
ALIGNMENT: LAWFUL GOOD
STRENGTH -10
INTELLIGENCE +100
CHARISMA +5

CAST



CHARACTER NAME: CHUCK
PLAYER NAME: RICHARD GLAMAN
BACKGROUND SCHOOL: BELLARMINE PREP
EXPERIENCE: GRADE 12
CLASS: BARD
RACE: HALF-ELF
ALIGNMENT: NEUTRAL GOOD
DEXTERITY +15
CONSTITUTION +9
WISDOM +4

CHARACTER NAME: MONSTER
PLAYER NAME: KOLYA GONZALEZ-WILER
BACKGROUND SCHOOL: SUMMIT ATLAS HIGH SCHOOL
EXPERIENCE: GRADE 12
CLASS: WIZARD
RACE: DRAGONBORN
ALIGNMENT: CHAOTIC GOOD
STRENGTH +3
CONSTITUTION +15
DEXTERITY +4



CHARACTER NAME: EVIL TINA
PLAYER NAME: SIENNA HANDFELT
BACKGROUND SCHOOL: LIBERTY HIGH SCHOOL
EXPERIENCE: GRADE 9
CLASS: BARD
RACE: ELF
ALIGNMENT: NEUTRAL EVIL
STRENGTH +7
INTELLIGENCE -10
CHARISMA +100

CAST



CHARACTER NAME: MONSTER

PLAYER NAME: MICHAEL HESS

BACKGROUND SCHOOL: WASKOWITZ ENVIRONMENTAL LEADERSHIP SERVICE

EXPERIENCE: GRADE 10

CLASS: RANGER

RACE: GNOME

ALIGNMENT: CHAOTIC GOOD

STRENGTH +5

DEXTERITY +7

INTELLIGENCE -5

CHARACTER NAME: LILITH

PLAYER NAME: FAYE HOSTETTER

BACKGROUND SCHOOL: KENNEDY HIGH SCHOOL

EXPERIENCE: GRADE 11

CLASS: ROGUE

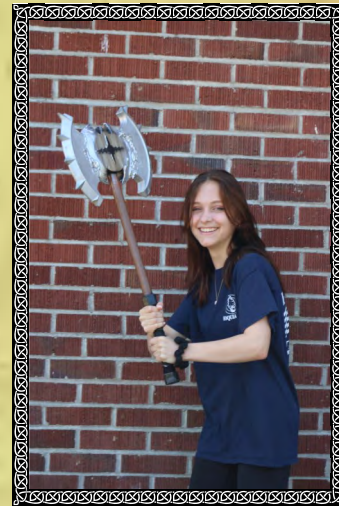
RACE: GNOME

ALIGNMENT: CHAOTIC GOOD

STRENGTH +100

INTELLIGENCE +100

CHARISMA LIKE +4, PROBABLY



CHARACTER NAME: NARRATOR/MONSTER

PLAYER NAME: LAUREN HUSERIK

BACKGROUND SCHOOL: KENTRIDGE HIGH SCHOOL

EXPERIENCE: GRADE 10

CLASS: BARD

RACE: KALASHTAR

ALIGNMENT: CHAOTIC GOOD

CHARISMA +9

DEXTERITY +6

WISDOM +7



CAST



CHARACTER NAME: FARRAH/MONSTER
PLAYER NAME: CHRISTINA LE
BACKGROUND SCHOOL: CHOICE ACADEMY
EXPERIENCE: GRADE 10
CLASS: WARLOCK
RACE: SATYR
ALIGNMENT: NEUTRAL GOOD
CHARISMA +5
STRENGTH +1
WISDOM +3

CHARACTER NAME: MONSTER
PLAYER NAME: LUCY MCCURDY-MOSS
BACKGROUND SCHOOL: HOLY NAMES ACADEMY
EXPERIENCE: GRADE 9
CLASS: ROGUE
RACE: ELF
ALIGNMENT: CHAOTIC GOOD
CHARISMA +4
INTELLIGENCE +8
STRENGTH -1



CHARACTER NAME: ORCUS/RONNIE
PLAYER NAME: ALEX MCDUFFIE
BACKGROUND SCHOOL: BIG PICTURE HIGH SCHOOL
EXPERIENCE: GRADE 11
CLASS: ARTIFICER
RACE: HALF-ELF
ALIGNMENT: CHAOTIC NEUTRAL
WISDOM -2
INTELLIGENCE +2
DEXTERITY +1

CAST



CHARACTER NAME: KALIOPE/KELLY
PLAYER NAME: ASHA NAVARATNASINGAM
BACKGROUND SCHOOL : SEATTLE CENTRAL COLLEGE
EXPERIENCE: GRADE 11
CLASS: SORCERER
RACE: YUAN-TI PUREBLOOD
ALIGNMENT: CHAOTIC GOOD
STRENGTH +7
INTELLIGENCE -1000
CHARISMA +8

CHARACTER NAME: MONSTER
PLAYER NAME: JOSEPHINE NOVICK
BACKGROUND SCHOOL : WESTSIDE SCHOOL
EXPERIENCE: GRADE 8
CLASS: ROGUE
RACE: GNOME
ALIGNMENT: CHAOTIC NEUTRAL
WISDOM -3
INTELLIGENCE +7
CHARISMA +8



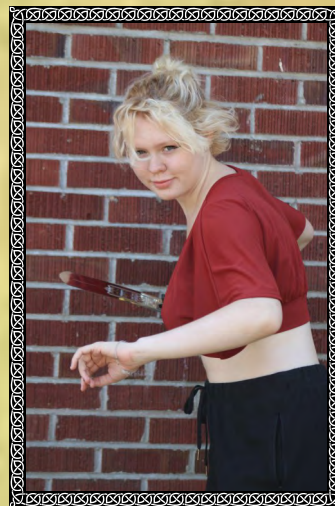
CHARACTER NAME: MONSTER
PLAYER NAME: JESSE OLSEN
BACKGROUND SCHOOL : BIG PICTURE HIGH SCHOOL
EXPERIENCE: GRADE 12
CLASS: PALADIN
RACE: HALF-ELF (I'M NOT WEAK ENOUGH TO JUST BE AN ELF)
ALIGNMENT: CHAOTIC GOOD (THE ENDS JUSTIFY THE MEANS)
STRENGTH +15
DEXTERITY +12
WISDOM +14

CAST



CHARACTER NAME: STEVE
PLAYER NAME: JOSIAH RICE
BACKGROUND SCHOOL: CASCADE MIDDLE SCHOOL
EXPERIENCE: GRADE 8
CLASS: ARTIFICER
RACE: TORTLE
ALIGNMENT: NEUTRAL GOOD
STRENGTH +4
DEXTERITY -1
CHARISMA +3

CHARACTER NAME: NARRATOR/MONSTER /FIGHT CAPTAIN
PLAYER NAME: MADDY RICE
BACKGROUND SCHOOL: EVERGREEN HIGH SCHOOL
EXPERIENCE: GRADE 11
CLASS: DRUID
RACE: ELF
ALIGNMENT: CHAOTIC GOOD
STRENGTH +7
INTELLIGENCE +15
CHARISMA +13



CHARACTER NAME: TILLY EVANS
PLAYER NAME: NOVA RIETBERG
BACKGROUND SCHOOL: THE DOWNTOWN SCHOOL
EXPERIENCE: GRADE 9
CLASS: ROGUE
RACE: HALFLING
ALIGNMENT: CHAOTIC GOOD
INTELLIGENCE +3
DEXTERITY +5
CHARISMA -2

CAST



CHARACTER NAME: MONSTER

PLAYER NAME: ALEX RUNNELS

BACKGROUND SCHOOL: HIGHLINE HIGH SCHOOL

EXPERIENCE: GRADE 10

CLASS: RANGER

RACE: ELF

ALIGNMENT: CHAOTIC GOOD

STRENGTH +3

WISDOM +10

CHARISMA -4

CHARACTER NAME: EVIL GABBI

PLAYER NAME: ELODIE SWAIN

BACKGROUND SCHOOL: MOUNT RAINIER HIGH SCHOOL

EXPERIENCE: GRADE 10

CLASS: SORCERER

RACE: HALFLING

ALIGNMENT: CHAOTIC NEUTRAL

STRENGTH -5

INTELLIGENCE +5

CHARISMA +3




Richard 

Congratulations, Richard
on your 11th year
with the Hi-Liners!
Can't wait to see
what is next!

Your biggest fans,
Mom & Dad

Sienna

We are your biggest cheerleaders. We are so happy to see you back on the stage and doing what you love. We are proud of all of your hard work during a crazy year.

 We love you!
Mom, Dad, Griffin, and Asher



You continue to amaze us with each new venture you take. We are so proud of you and can't wait to see what you'll do next.

Rakastamme sinua (we love you).

Love,
Your family

ALEX R.

Asha

We are so proud of you and can't wait to watch you shine.

Remember to always "Dream" big!

Love,
Your parents, your siblings, and George (of course)

Luciana

Luciana, you are anything but AVERAGE!

Love,
Your average family and your especially average dog



Josie



Great job, Josie!
We are so proud of you.
Love,
Your family



Lucy

We're so excited to see
you back on stage!
It's been long time
but you're still our little **monstar!**



AUSTIN

Grandpa's watching!
He always was one of your
biggest cheerleaders.
Shine like the star you are!
You are **AMAZING!**
Love ya always.
Grandma



Elodie

Great job, Elodie!

We are so proud of you!

Love, your family

Page

You're my favorite monster

Love, Bernie

thank
you!

Special Thanks

to

Glendale Lutheran

Pastor John Barich

Jessica Hostetter

Joan Sandberg

Sam Barerra

Hood River Valley High School

Rachel Harry

Sharon and Steve Ashurst

Miller Paint



ARE YOU READY



Auditions September 13th and 16th

Ages 7 and up

Rehearsals begin Monday, September 27th

Register for auditions at hi-liners.org

UPCOMING CLASSES

Footlights	Ages 4-6 Children will practice active listening, following directions, and taking turns, BUT DON'T TELL THEM. They'll think we're just playing games, singing songs, and making up stories.
Imagination Station	Ages 6-8 Foundation skills of observation, mimicry, maintaining focus, and cueing are practiced in theatre games, stories and songs. Our studio is the place to learn short scenes and songs for performance on our final day!
Musical Theatre Playhouse	Ages 9-11 The Playhouse is a place to learn to make the physical and vocal choices necessary to create a character. Students will work on the fundamental theatrical skills of vocal projection, making character choices, creating stage pictures, and collaborating with other actors.
Improvisation	Ages 10+ Learn to think on your feet, be creative on demand and finally get the respect you deserve for being the class clown!
Ballet Warm-Up	Ages 9+ This dance class is intended for beginning to intermediate level students interested in improving their dance skills and technique with a musical theatre focus.
Dance for Musical Theatre	Ages 9+ This dance class is intended for beginning to intermediate level students interested in improving their dance skills and technique with a musical theatre focus.
Tap Your Talent	Ages 9+ This dance class is intended for beginning to intermediate level students interested in improving their dance skills and technique with a musical theatre focus.

For more information and to register for classes, go to Hi-liners.org



~Visit us on Redbubble~

You'll find Hi-Liners swag

<https://www.redbubble.com/people/thehi-liners/explore?page=1&sortOrder=recent>